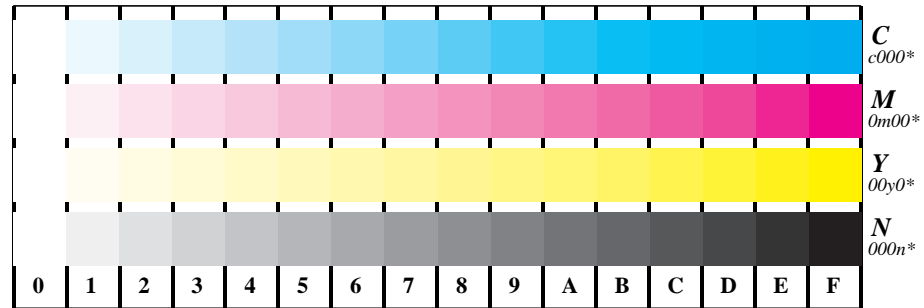


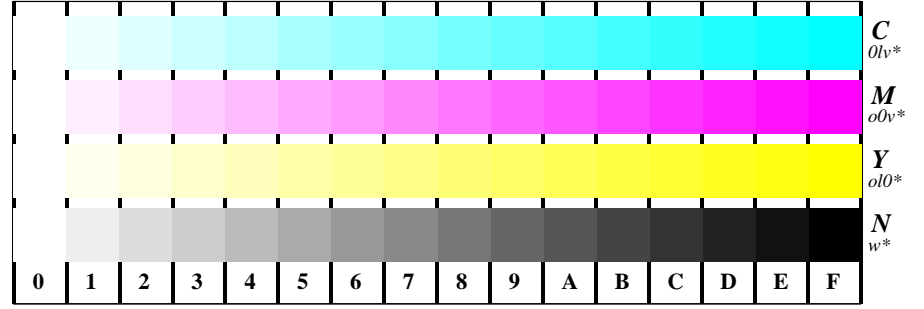
Information and Order: <http://www.ps.bam.de>

Image file version 2.0, 20020201-DE36

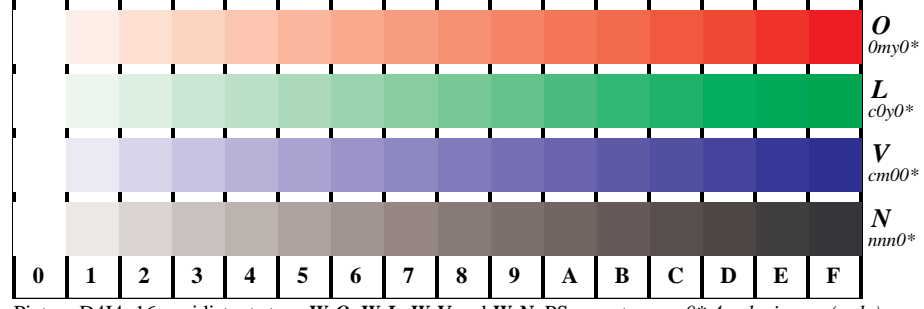
PS operators: 4 colorimage, 3 colorimage and image



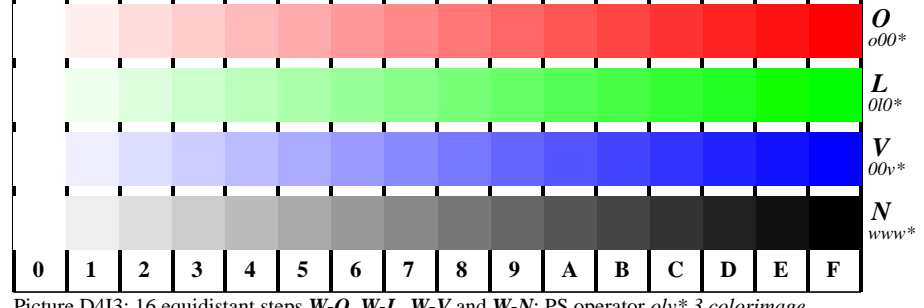
Picture B414: 16 equidistant steps W-C, W-M, W-Y and W-N; PS operator *cmY0*/000n* 4 colorimage*



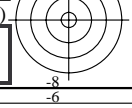
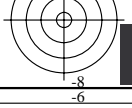
Picture B413: 16 equidistant steps W-C, W-M, W-Y and W-N; PS operator *olv* 3 colorimage / w* image*



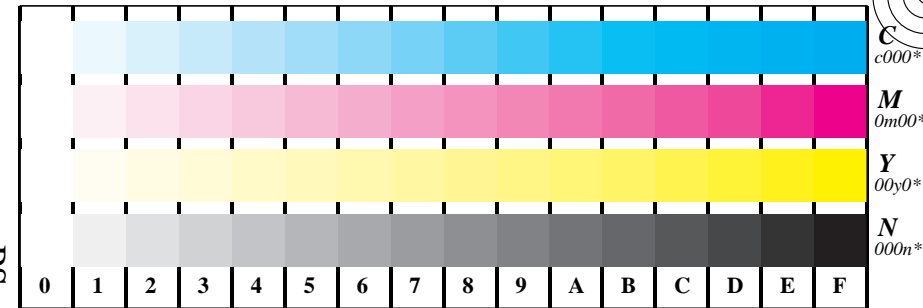
Picture D414: 16 equidistant steps W-O, W-L, W-V and W-N; PS operator *cmY0* 4 colorimage (only)*



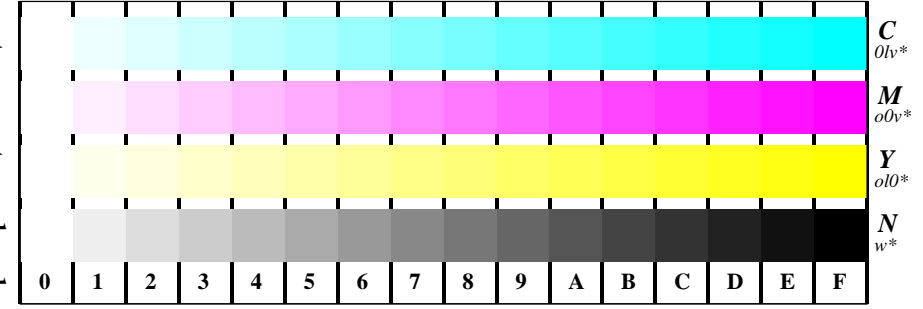
Picture D413: 16 equidistant steps W-O, W-L, W-V and W-N; PS operator *olv* 3 colorimage*



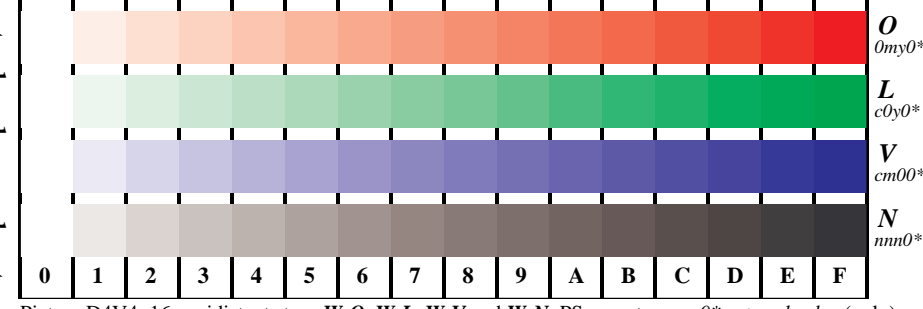
PS operators: setcmYkcolor, setrgbcolor and setgray



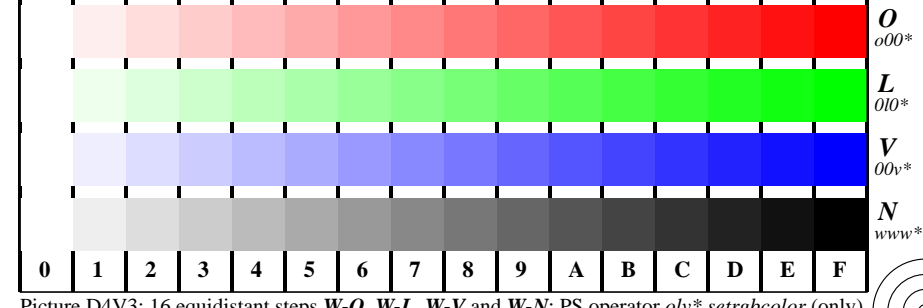
Picture B4V4: 16 equidistant steps W-C, W-M, W-Y and W-N; PS operator *cmY0*/000n* setcmYkcolor*



Picture B4V3: 16 equidistant steps W-C, W-M, W-Y and W-N; PS operator *olv* setrgbcolor / w* setgray*



Picture D4V4: 16 equidistant steps W-O, W-L, W-V and W-N; PS operator *cmY0* setcmYkcolor (only)*



Picture D4V3: 16 equidistant steps W-O, W-L, W-V and W-N; PS operator *olv* setrgbcolor (only)*

BAM registration: 20020201-DE36/10L/L36E06NP.PS/.PDF

BAM material: code=tha4ta

